

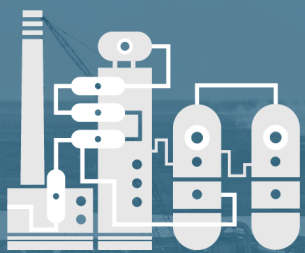


Bechtel delivers clean, safe energy to the world

In partnership with customers, Bechtel helps provide clean, reliable, and affordable energy to the world. Today, Bechtel-built facilities produce more than 30% of the world's LNG capacity.

- INFRASTRUCTURE
- MINING & METALS
- NUCLEAR, SECURITY & ENVIRONMENTAL
- OIL, GAS & CHEMICALS

In four years Bechtel has delivered:



14 LNG trains



61 MTPA

(Million metric tons per annum)
More than **4 times** the amount of our closest competitor



85 Million

households powered each year

Helping customers meet global energy demand

1st LNG export facility delivered in U.S. in **50 years**

Sabine Pass Liquefaction Trains 1 - 5
Louisiana, USA

1st large-scale greenfield facility ever built in the U.S.

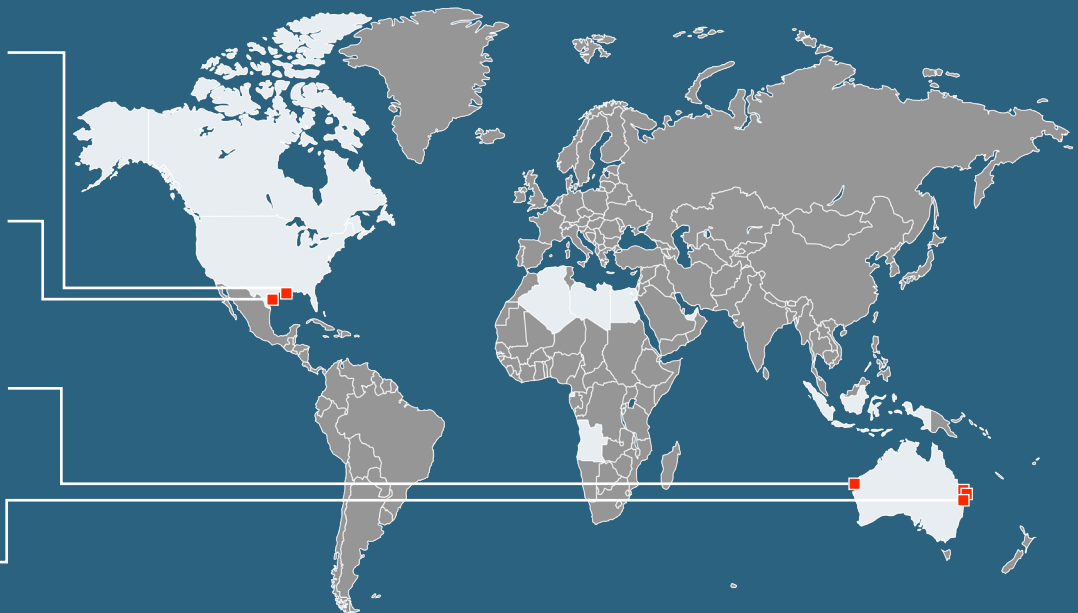
Corpus Christi Liquefaction Train 1
Texas, USA

Delivering energy **domestically** and exporting **globally**

Wheatstone LNG Trains 1 & 2
Western Australia

Simultaneous construction of **six** LNG trains for **three** customers on **one island**.

Queensland Curtis LNG Trains 1 & 2
Gladstone LNG Trains 1 & 2
Australia Pacific LNG Trains 1 & 2
Queensland Australia



■ Bechtel has delivered LNG projects in nine countries

Over 55 years, Bechtel has built 44 trains producing roughly 129 million metric tons per year